



Land Empires.

PERIODIZATION (n)- ability to describe, analyze, & evaluate different ways that historians divide history (including turning points, starting/ending dates)



EARLY MODERN (1450 CE-1750 CE)

GLOBAL INTERACTIONS

**1450
CE**

**1750
CE**

BY 1450 CE

- CLASSICAL TRADE ROUTES INTENSIFY
- ISLAM SPANS AFRO-EURASIA
- MONGOL EMPIRE BROKEN UP
- AMERICAS ISOLATED
- INTERACTIONS INTENSIFY (*LANG., RELIGION, LABOR*)

DURING



TRANS-ATLANTIC SLAVE TRADE

BY 1750 CE

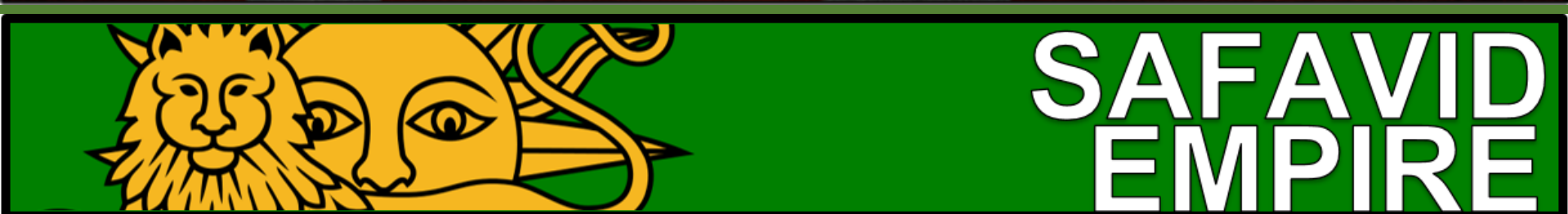
- AMERICA IS FULLY INTEGRATED INTO THE WORLD TRADE
- EARTH'S POPUL. 2X
- EUROPEAN MARIT. EMPIRES PERMEATE
- COLOMBIAN EXCH.
- MONARCHIES REIGN
- COERCED LABOR
- MERCANTILISM=ECON

GEOGRAPHY



ANATOMY of an EMPIRE

STEP ONE: YOU WILL BE ASSIGNED AN EMPIRE



STEP TWO: RECORD THIS INFO ON THE BACK & ATTRIBUTE IT TO THE BODY

OTTOMAN EMPIRE

PAGE #s- 451-460

SULEYMAN
OTTOMAN TURKS
OSMAN
BEYS
SULTAN
JANISSARIES
BATTLE of MURAD
MEHMET II
FALL of CONSTANTINOPLE
ISTANBUL
SAFAVIDS
PASHAS
GRAND VIZIER
"SLEEPING GIANT"
SUCCESSION
HAREM
DEVSHIRME
SULTANATE of WOMEN
SUNNI/"DEFENDER of the..."
RELIGIOUS TOLERANCE
MILLET
WOMEN's RIGHTS
HAGIA SOPHIA 2.0
MINARETS
SILK & RUGS

SAFAVID EMPIRE

PAGE #s- 461-464

TAMERLANE
UZBEKS
SHAH ISMAIL
SAFI AL-DIN
SUFIS
SHI'ITES/"RED HEADS"
SAFAVIDS vs. OTTOMANS
SHAH ABBAS
ISFAHAN
WARRIOR ELITES
('QIZILBASH' WARRIORS)
MIXED SOCIETY
SHI'A=UNIFYING FORCE
STATE RELIGION
BAKER/BUTCHER STORY
ROAD SYSTEM/SAFETY
STATUS vs. OTT. & MUGHALS
SCIENCE, MEDICINE, MATH
ARCHITECT. OF ISFAHAN
SAFAVID TEXTILES
PERSIAN CARPET WEAVING
SAFAVID PORTRAITS
RIZA-I-ABBASI

MUGHAL EMPIRE

PAGE #s- 464-469; 473-6

VASCO DA GAMA
BABUR & THE FOUNDING
HUMAYUN
AKBAR
AKBAR's TOLERANCE
DIN-I-ILAH
ZAMINDARS
HINDU/MUSLIM LAWCODES
SOCIAL HARMONY
DROUGHT of 1590
JAHANGIR
NUR JAHAN
MUMTAZ MAHAL
SHAH JAHAN
DELHI
TAJ MAJAL
AURANGZEB
SATI, CASTRATION, TAXES
Anti-RELIGIOUS TOLERANCE

Sati, CASTRATION, TAXES
Anti-RELIGIOUS TOLERANCE
(Skip SHADOWS through GUN
"GUNPOWDER EMPIRE"
MUGHAL SYNCRETISM
MUGHAL TEXTILES
RAMCARITMANAS

MANCHU EMPIRE

PAGE #s- 479-484; 486-492

MING→QING
BARBARIAN ARRIVAL
BORDERS of CHINA
PORTUGUESE MACAO
TRADE with EUROPEANS
CHRISTIANITY in CHINA
FALL of the MING
MANCHUS/JURCHEN
QING DYNASTY
MANCHU RULE
REIGN of KANGXI
REIGN of QIANLONG
ROLE of CONFUCIANISM
MANCHU BANNERS
MANCHU DYARCHY
CIVIL SERVICE EXAM

(Skip CHINA... ONSLAUGHT)
AGRARIAN ECONOMY
POPULATION EXPLOSION
INDUSTRIALIZATION?
SONS vs. DAUGHTERS
WOMEN in CHINA
CHINESE NOVELS

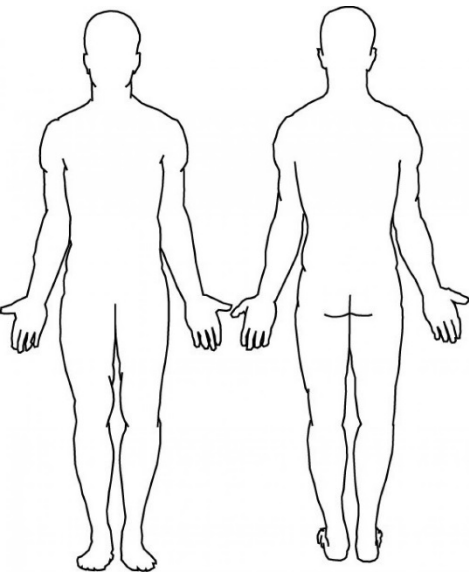
RUSSIAN EMPIRE

PAGE #s- 442-3; 523-4

TSAR
IVAN IV the TERRIBLE
MICHAEL ROMANOV
PETER the GREAT
DESCRIPTION of PETER
GRAND EMBASSY to the WEST
WESTERNIZATION
St. PETERSBURG
The STRELTSY

CATHERINE II THE GREAT
ENLIGHTENED REFORMS
DIDEROT ROAD TRIP
EFFECTS of REFORMS
PUGACHEV REBELLION
RUSSIAN EXPANSION

(FOR THE REST, USE THE
NOTES ON RUSSIA GIVEN
OUT IN CLASS. YOUR BOOK
HATES RUSSIA FOR SOME
REASON)



- A. RESEARCH YOUR EMPIRE PAYING SPECIAL FOCUS TO THE TOPICS MENTIONED IN THE LIST ABOVE
- B. USE THIS RESEARCH TO CREATE A PERSONIFICATION OF YOUR EMPIRE...
- C. RUBRIC:
 - A. AT LEAST 5 ANATOMICAL ATTRIBUTIONS
 - B. FULL COVERAGE OF THE INFORMATION
 - C. LEGIBILITY... IF WE CAN'T READ IT=:(
 - D. PRESENTATION (INCLUDING 1 SHORT CLIP ON ONE OF YOUR SPECIFIC TOPICS ABOVE... CAN'T USE MINE :)

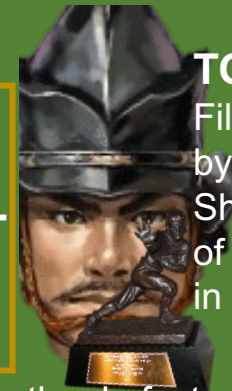
TOKUGAWA SHOGUNATE



ODA NOBUNAGA-
Samurai who attempted to unify Japan after the Warring States period in the mid-1500s. He conquered 1/3 of Japan before his death.



TOYOTOMI HIDEYOSHI-
Succeeded his former lord (Oda) and brought Japan under his rule before unsuccessfully invading Korea. He also persecuted Christians.

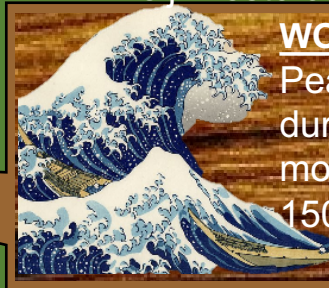


TOKUGAWA IEYESU
Filled power vacuum left behind by Hideyoshi and took title of Shogun. Finalized centralization of Japan. Signed Christian ban in 1614 (lasts until the 1870s)

“ODA POUNDS THE NATIONAL RICECAKE, HIDEYOSHI KNEADS IT IEYESU SITS DOWN & EATS IT”



EDO (TOKYO)-Became the de facto seat of government under Tokugawa. The Emperor does not move here until 1868 during the Meiji Restoration, when the name changes to Tokyo.



WOODBLOCK PRINTING

Peaked as an art form during this period (had movable type since 1500s); style preferred by Japanese artists



CLOCKS/GLASSES-

Examples of tech. that fascinated the Japanese



HOSTAGE SYSTEM-

where the Shogun forced the Daimyo to leave his family in Edo (Toyko).

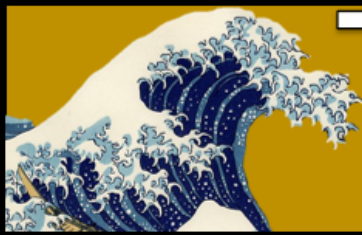


CHRISTIANITY IN JAPAN- Persecuted by Hideyoshi and banned by Tokugawa. Many Christians forced underground (Silence)



SILENCE

TOKUGAWA SHOGUNATE



FRANCIS XAVIER- was the first Jesuit Missionary (one of the first 7 Jesuits; he was a friend of St. Ignatius) to go into Japan. He actually converted many Daimyo!!! (*He predates the ban by 60 years... I just couldn't find room on the other page...*)

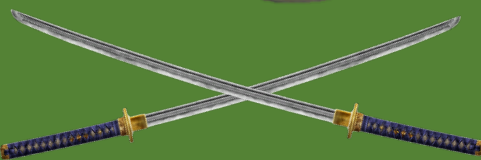


TOKUGAWA FLAG- This is in the running for the worst flag.... Ever!

SAKOKU- Japanese policy of isolation from 1633-1853 (literally 'locked or chained' country)



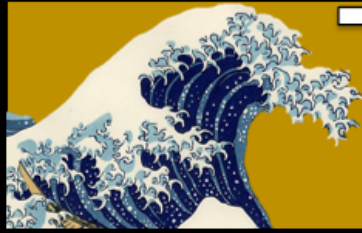
DESHIMA- Under Sakoku, the only trading allowed was on the floating island off of modern day Nagasaki. All outside learning was called "Dutch Learning"



SAMURAI- The knights of Post-Classical/Early Modern Japan; during this period, Samurai became courtiers, bureaucrats, & administrators due to lack of military conflict. The swords became more symbolic of their rank



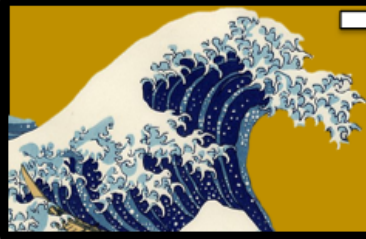
TOKUGAWA SHOGUNATE





TOKUGAWA SHOGUNATE





TOKUGAWA SHOGUNATE



THE OTHER FIVE EMPIRES... ARE YOUR RESPONSIBILITY....



OTTOMAN
EMPIRE



SAFAVID
EMPIRE



MUGHAL
EMPIRE



MANCHU
EMPIRE



RUSSIAN
EMPIRE